



THE LONDONER  
LEICESTER SQ.

# Shaped to entertain

THE GREEN ROOM

With a private bar, luscious fabrics and rich colour palettes, The Green Room is a dream for the elite host.

**LOGISTICS**

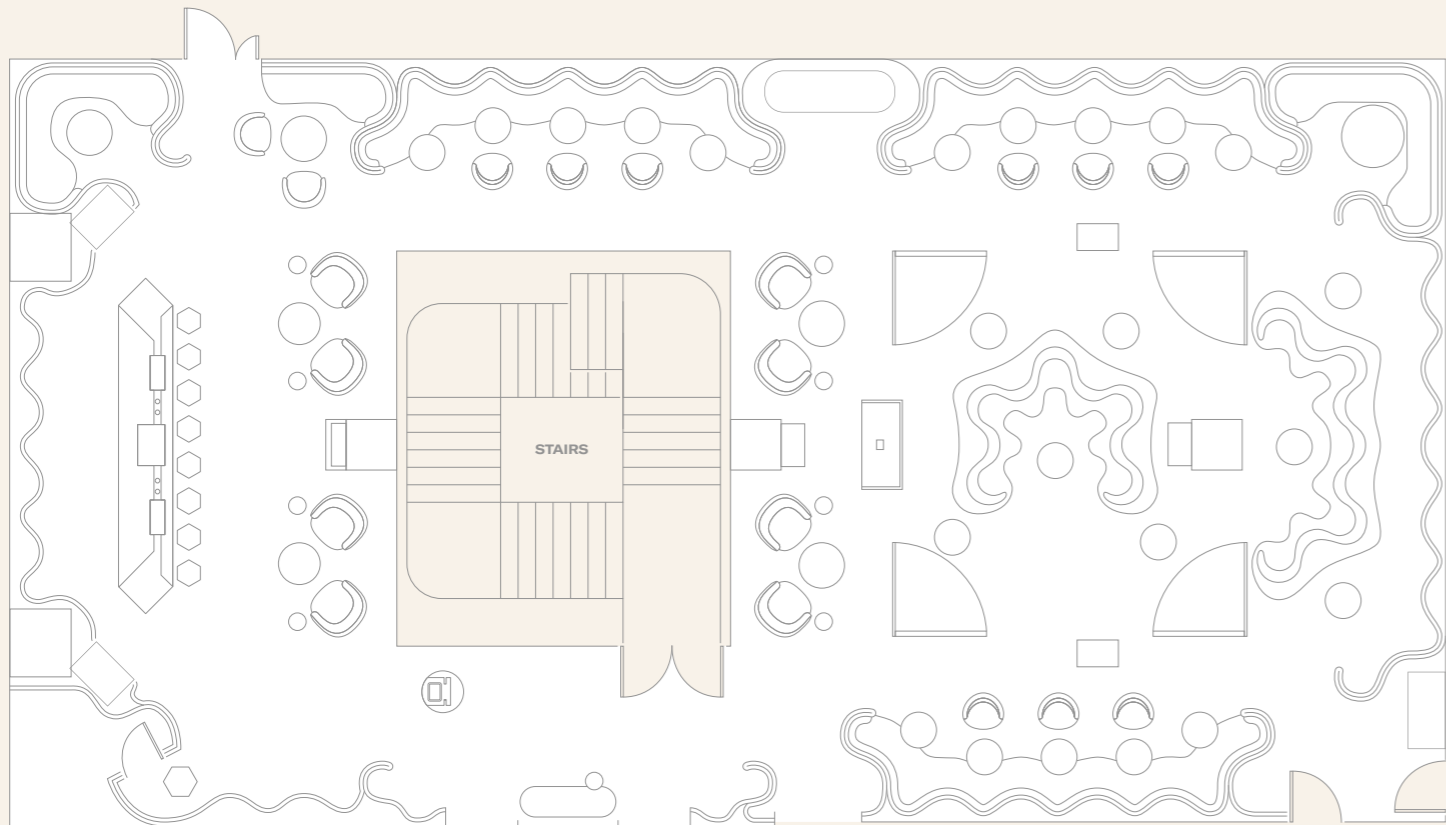
- A loading bay with space for a vehicle up to 10.4m in length with 20 kPa imposed load
- A dedicated bar providing seamless service
- A dedicated kitchen serving hot and cold food
- Direct lifts from street level



A visual reverie by design, The Green Room is a beautiful space perfect for receptions, meetings and gatherings.

<b>CAPACITIES</b>	Theatre	Classroom	Boardroom	Cabaret	Lunch/dinner	U-shape	Reception
The Green Room	76	30	28	24	40	20	180

<b>DIMENSIONS</b>	Area		Length		Width		Height	
	sq. m	sq. ft	m	ft	m	ft	m	ft
The Green Room	299	3,214	23.7	77' 8"	12.6	41' 3"	2.2	7' 2"



Introducing  
exquisite  
textures



THE LONDONER

LEICESTER SQ.