



THE LONDONER

LEICESTER SQ.

# Capital Suite

[Click to enter](#)

- ◆ Welcome
- Capital Suite
- The Residence
- The Dining Scene
- The Retreat



# THE WORLD'S FIRST SUPER BOUTIQUE HOTEL

Welcome to an urban resort  
in the heart of the West End.

Individual, intimate, eclectic, and curated; yet staggering in scale, The Londoner is a new hotel category of one. A perfectly engineered collection of spaces, tastes and textures brought to life over 16 storeys on London's legendary Leicester Square. The Londoner is home to 350 exquisite bedrooms and suites, six concept eateries and bars, including a rooftop lounge and tavern, a private guest residence, an urban wellness retreat, seven inspiring meeting spaces and a stunning ballroom for up to 850 guests.



THE LONDONER  
LEICESTER SQ.



Welcome

Capital Suite

Floor Plans

Suite Privileges

The Residence

The Dining Scene

The Retreat



# CAPITAL SUITE

Lead your guests through a wood panelled entrance into a bespoke, loft-inspired open-plan living room. A velvety sitting room, spectacular guest bathroom, and a custom dining table are designed for entertaining – but when sleep calls, your separate bedroom and spacious master bathroom seem utterly irresistible.



THE LONDONER  
LEICESTER SQ.

Welcome

Capital Suite

◆ Floor Plans  
Suite Privileges

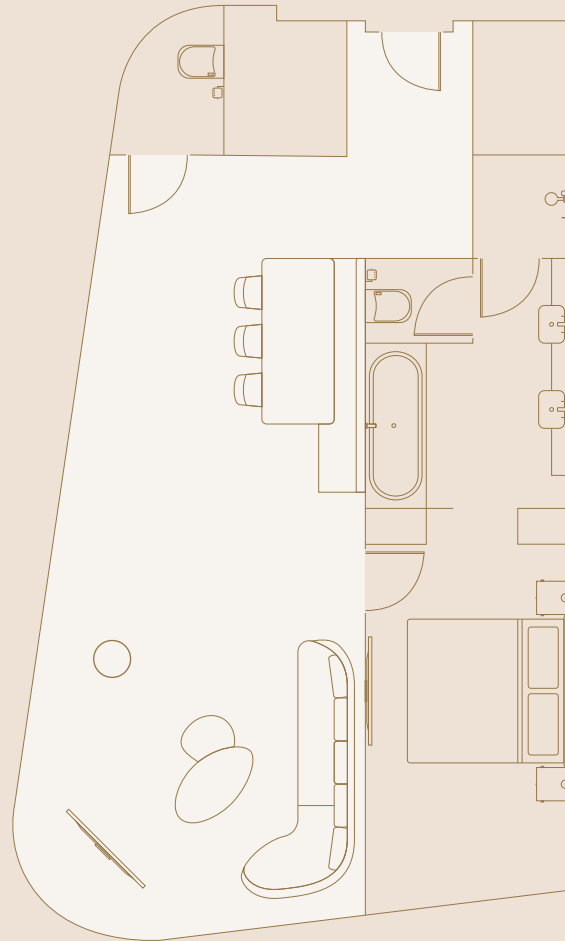
The Residence

The Dining Scene

The Retreat

Capital Suite

Total Space: 67-86 m<sup>2</sup> / 721-926 ft<sup>2</sup>



Living Space



## Living Space

- Designer chairs and sofas
- Marble dining table
- Original art and sculptures
- Leicester Square views
- Smart TV with Google Chromecast
- Guest restroom



THE LONDONER  
LEICESTER SQ.



Welcome

Capital Suite

◆ Floor Plans  
Suite Privileges

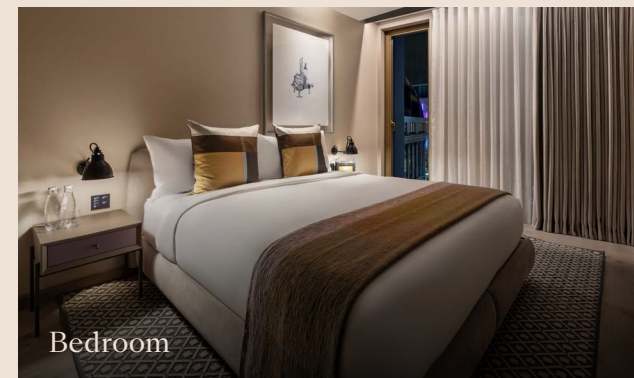
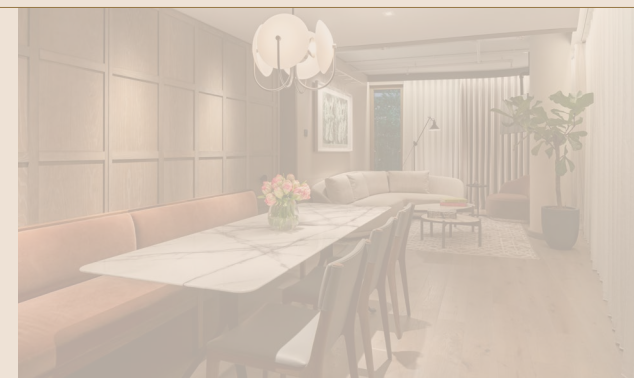
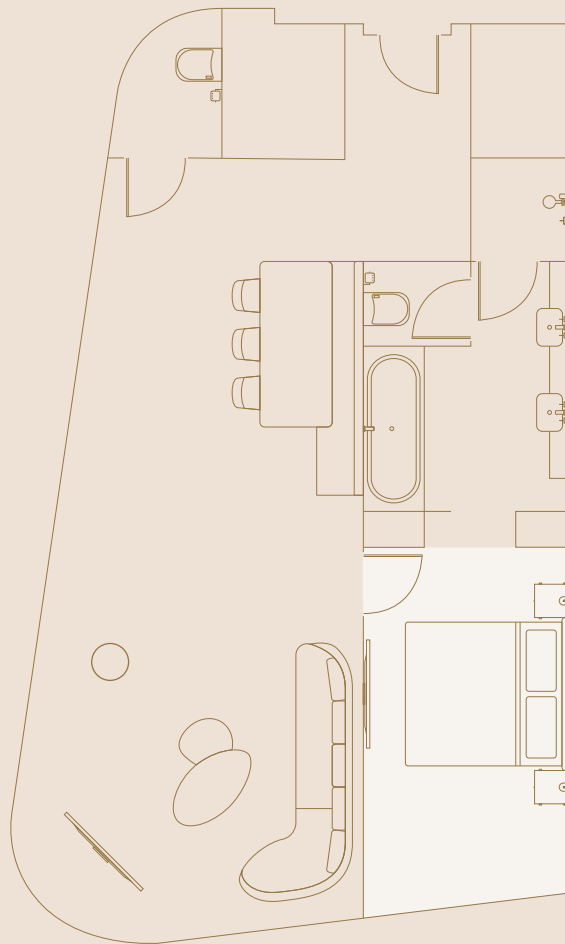
The Residence

The Dining Scene

The Retreat

## Capital Suite

Total Space: 67-86 m<sup>2</sup> / 721-926 ft<sup>2</sup>



Bedroom



## Bedroom

- King bed with handcrafted Vispring mattress
- 400 thread count Irish linen
- Feather down pillows and mattress topper
- Original art by Edd Pearman
- Unlimited bottled premium water
- Steamery handheld steamer
- Roberts Bluetooth radio and speakers
- Handcrafted umbrella
- In-room drawer safe
- Complimentary latest generation Wi-Fi 6
- Smart TV with Google Chromecast
- Lutron lighting control system



THE LONDONER  
LEICESTER SQ.

Welcome

Capital Suite

◆ Floor Plans  
Suite Privileges

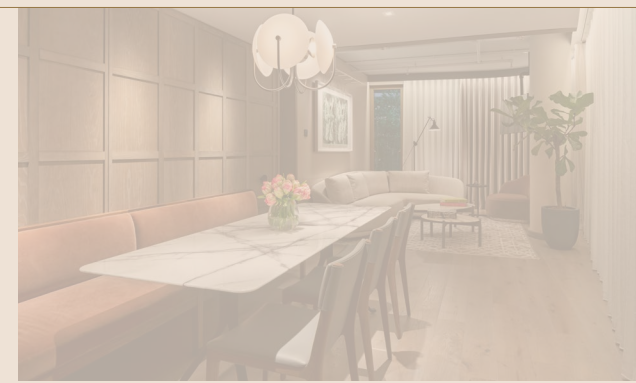
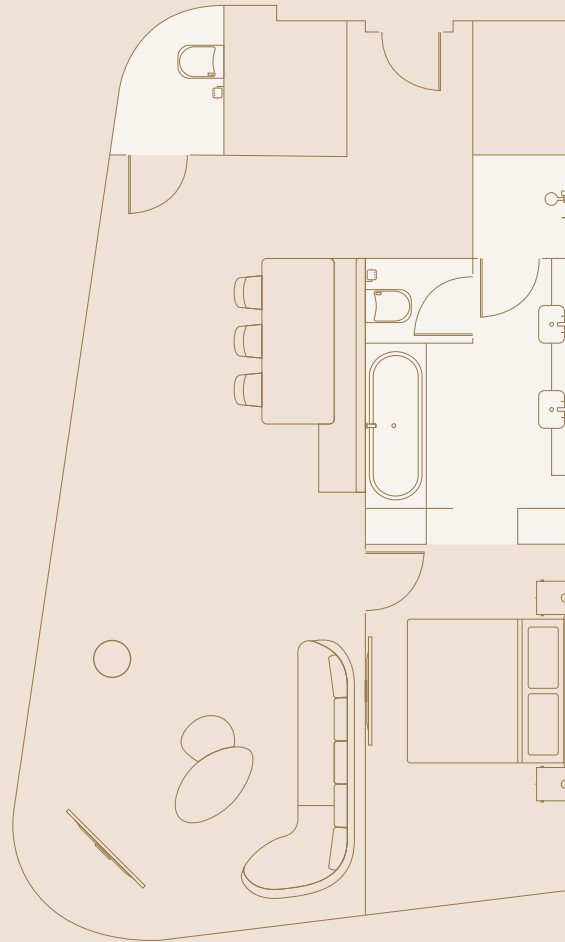
The Residence

The Dining Scene

The Retreat

## Capital Suite

Total Space: 67-86 m<sup>2</sup> / 721-926 ft<sup>2</sup>



Bathroom

## Bathroom

- Spacious vanity with illuminated theatre mirror
- Miller Harris bathroom amenities
- Premium Japanese Toto washlets with heated seat, jet wand cleanser and sensor-activated lid
- Luxurious bathrobe and cushioned slippers
- Double sink
- Bathtub and shower
- Guest restroom



THE LONDONER  
LEICESTER SQ.



Welcome

Capital Suite

Floor Plans

◆ Suite Privileges

The Residence

The Dining Scene

The Retreat



## Suite Privileges

- Exclusive welcome amenity
- An amuse-bouche from our Head Pastry Chef
- Complimentary beverage trolley tailored to your preference
- 24-hour host service for every need
- VIP in-room check-in/out
- Complimentary bespoke housekeeping services
- Personalised itinerary of unique cultural experiences
- Dyson hairdryer
- Fortnum & Mason luxury hamper



THE LONDONER  
LEICESTER SQ.



Welcome

Capital Suite

◆ The Residence

The Residence

The Dining Scene

The Retreat



# WELCOME TO THE RESIDENCE

A collection of three beautifully designed  
spaces for hotel residents only.



THE LONDONER  
LEICESTER SQ.



Welcome  
Capital Suite  
The Residence  
◆ The Residence  
The Dining Scene  
The Retreat



THE LONDONER  
LEICESTER SQ.

## The Residence

The Residence has been curated to meet our guests' every work and relaxation needs, with complimentary antipasti, soft drinks, tea and coffee served throughout the day.



Welcome

Capital Suite

The Residence

☉ The Dining Scene

8 at The Londoner

Whitcomb's

The Stage

Joshua's Tavern

In-room Dining

The Retreat



## THE DINING SCENE

The Londoner's restaurants and bars reflect the city's eclectic dining scene.

Elegant Japanese cuisine features alongside a contemporary take on the French Mediterranean. Bright and airy spaces for breakfast and brunch contrast intimate evening spots, whilst the rooftop sets the scene for spectacular gazing and grazing.



THE LONDONER  
LEICESTER SQ.



Welcome

Capital Suite

The Residence

The Dining Scene

8 at The Londoner

Whitcomb's

The Stage

Joshua's Tavern

In-room Dining

The Retreat



THE LONDONER  
LEICESTER SQ.

## 8 at The Londoner

A decadent rooftop izakaya lounge that reimagines the informal and traditional Japanese style of dining and drinking in three stunning settings.



Welcome  
Capital Suite  
The Residence  
The Dining Scene  
8 at The Londoner  
◆ Whitcomb's  
The Stage  
Joshua's Tavern  
In-room Dining  
The Retreat



## Whitcomb's

The Londoner's signature restaurant is a place where light, artistic surroundings meet cuisine led by exclusive, seasonal ingredients. Welcome to a corner of the French Mediterranean, with a terrace overlooking Leicester Square.



THE LONDONER  
LEICESTER SQ.



Welcome

Capital Suite

The Residence

The Dining Scene

8 at The Londoner

Whitcomb's

◆ The Stage

Joshua's Tavern

In-room Dining

The Retreat



THE LONDONER  
LEICESTER SQ.

## The Stage

Step into the limelight of The Stage, where the drama unfolds with a spectacular programme featuring afternoon tea and life's great delights.



Welcome  
Capital Suite  
The Residence  
The Dining Scene  
8 at The Londoner  
Whitcomb's  
The Stage  
◆ Joshua's Tavern  
In-room Dining  
The Retreat



THE LONDONER  
LEICESTER SQ.

### Joshua's Tavern

The Londoner's tavern is a homage to Sir Joshua Reynolds, 18th century portrait artist and former Leicester Square resident. Join us for regular live music performances and a contemporary bill of fare with gastro bites, beers and more than 50 types of gin.



Welcome

Capital Suite

The Residence

The Dining Scene

8 at The Londoner

Whitcomb's

The Stage

Joshua's Tavern

◆ In-room Dining

The Retreat



## IN-ROOM DINING

Welcome to The Londoner's in-room dining experience – where the capital's contemporary dining scene meets elegant silver tray service.



THE LONDONER  
LEICESTER SQ.

Welcome

Capital Suite

The Residence

The Dining Scene

● The Retreat

The Spa

Hair & Beauty

The Gym

Refuel



# A STOREY OF WELLNESS

Welcome to The Retreat, an urban sanctuary of revitalisation that disconnects Londoners from London.



THE LONDONER  
LEICESTER SQ.



Welcome  
Capital Suite  
The Residence  
The Dining Scene  
The Retreat  
◆ The Spa  
Hair & Beauty  
The Gym  
Refuel



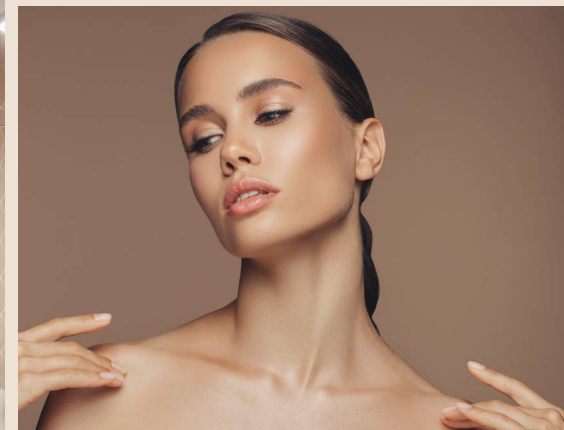
## The Spa

The spa features tranquil spaces to relax, refresh and detoxify, including a swimming pool, hydropool, sauna, steam room and secluded cabanas.



THE LONDONER  
LEICESTER SQ.

Welcome  
Capital Suite  
The Residence  
The Dining Scene  
The Retreat  
The Spa  
● Hair & Beauty  
The Gym  
Refuel



## Hair & Beauty

Whether you are after the perfect blow-dry at Hiro Miyoshi Hair & Beauty or a beard trim at Joe Vipond Gentlemen's Grooming, The Retreat's hair & beauty services will leave you looking sharp.



- Welcome
- Capital Suite
- The Residence
- The Dining Scene
- The Retreat
  - The Spa
  - Hair & Beauty
- ◆ The Gym
- Refuel



## The Gym

Specifically designed to encourage high-intensive training and promote ambitious results, The Gym has partnered with Technogym to provide state-of-the-art equipment with an adjoining studio for classes.



THE LONDONER  
LEICESTER SQ.



Welcome  
 Capital Suite  
 The Residence  
 The Dining Scene  
 The Retreat  
   The Spa  
   Hair & Beauty  
   The Gym  
 ♦ Refuel



## Refuel

Created to supplement The Retreat's spa treatments and workout sessions, Refuel is a results-driven superfood and drinks clinic that aims to nourish and promote a holistic state of wellbeing. Discover a range of Ayurvedic breakfasts, health juices, smoothies, light lunches and more, designed to complement post workout sessions and health routines.





THE LONDONER

LEICESTER SQ.

38 Leicester Square  
London WC2H 7DX  
+44 (0)20 7451 0101  
[thelondoner.com](http://thelondoner.com)