



THE LONDONER  
LEICESTER SQ.

# The Green Room Floorplan

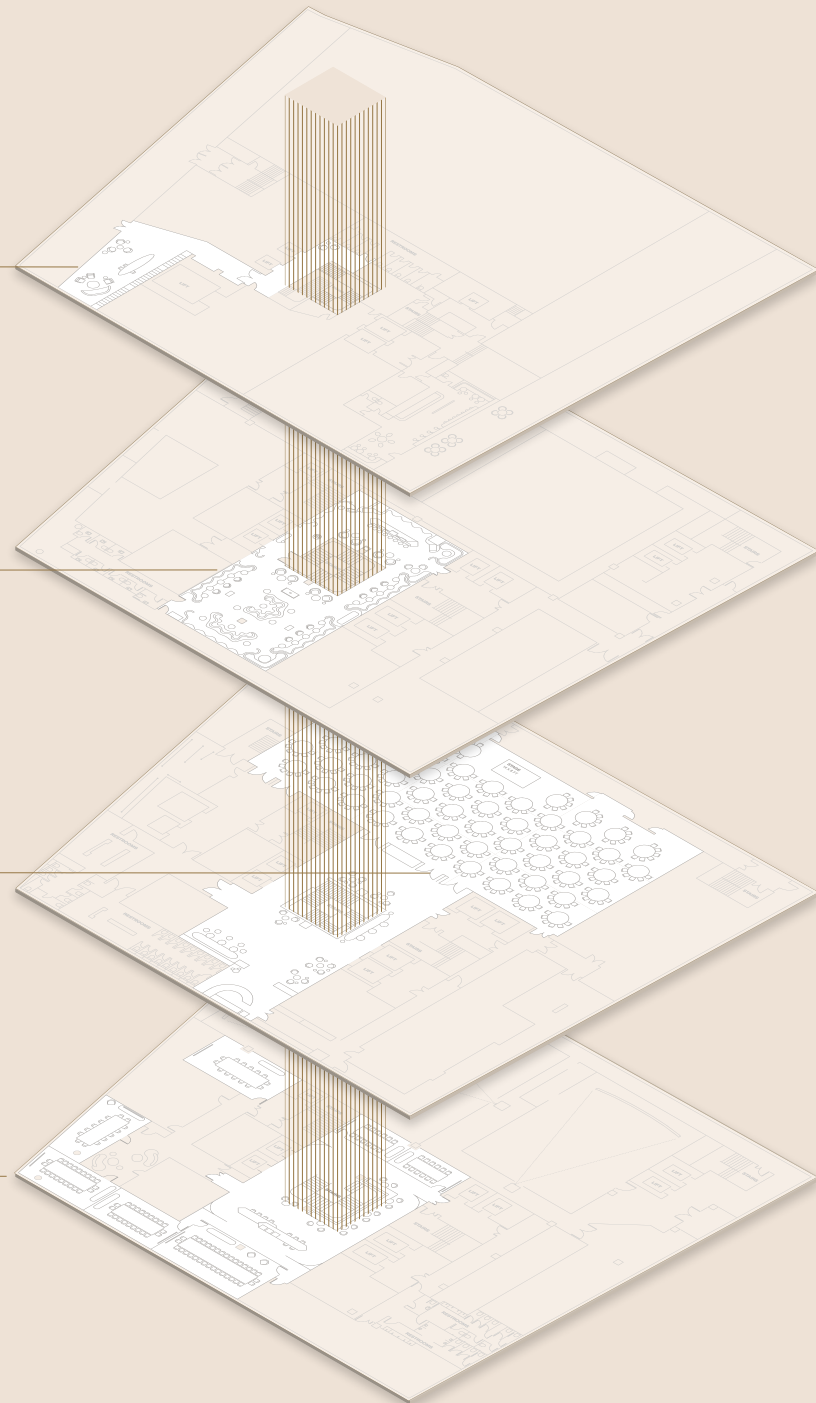
# THE SPACES AT A GLANCE

50 WHITCOMB'S  
GFL

THE GREEN ROOM  
B1

THE BALLROOM  
B2

THE GALLERY  
B3



# THE GREEN ROOM

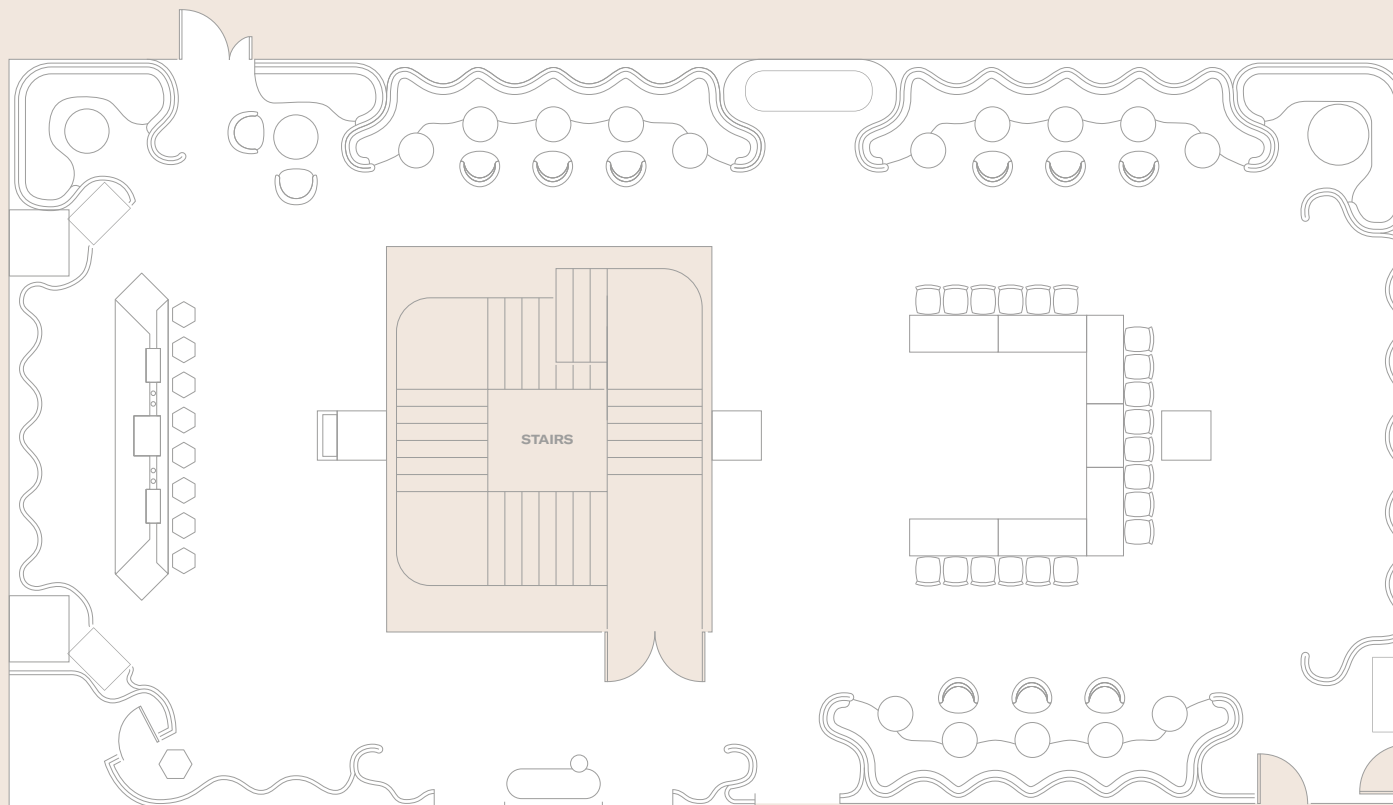
DIMENSIONS

	Area		Length		Width		Height	
	sq. m	sq. ft	m	ft	m	ft	m	ft
The Green Room	299	3,214	23.7	77' 8"	12.6	41' 3"	2.2	7' 2"

CAPACITIES

	Theatre	Classroom	Boardroom	Lunch/Dinner* *round tables	U-shape	Reception	Imperial
The Green Room	76	30	28	82	20	150	80

# THE GREEN ROOM

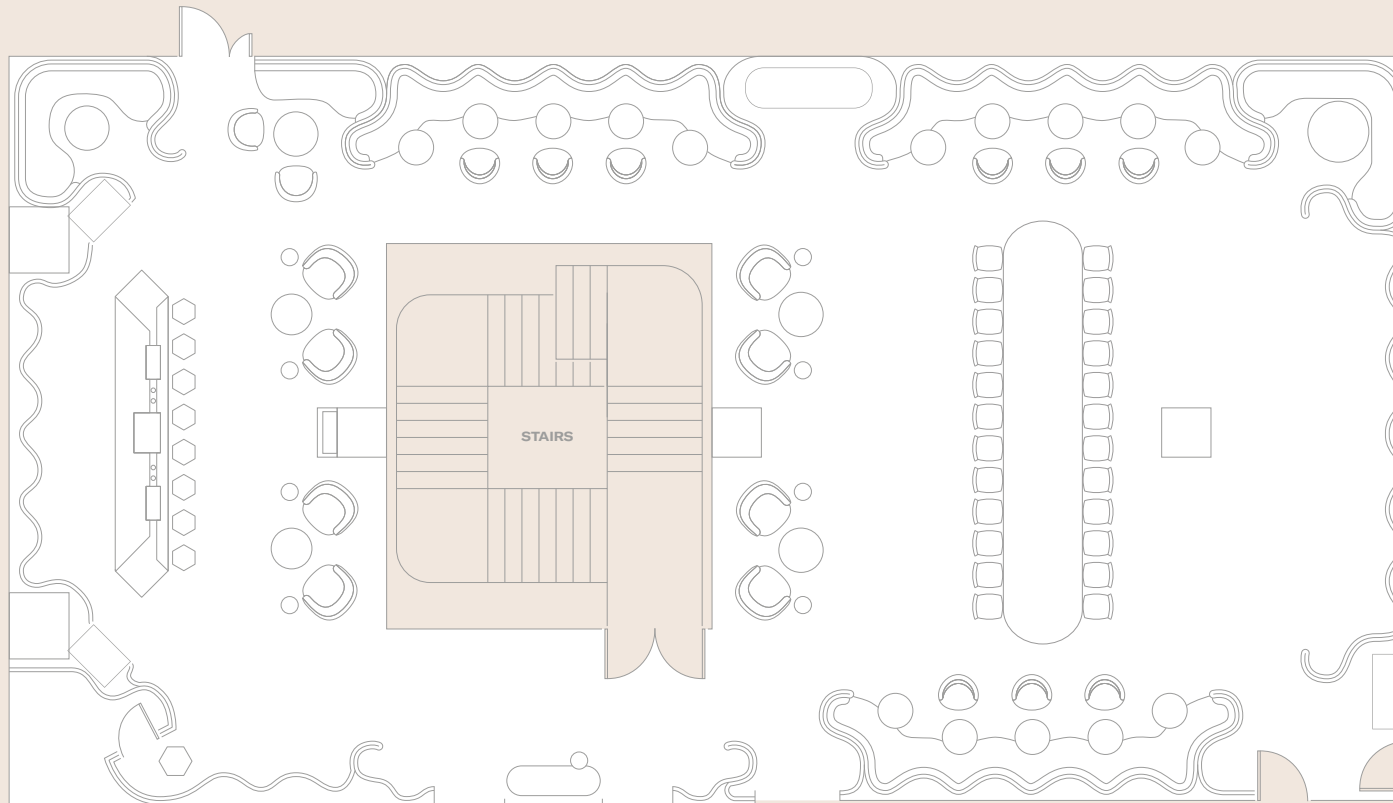


## U-SHAPE

7 tables  
20 capacity, 6 tables at 3 guests per table  
and 1 of 2 guests

For more room layouts tailored to your event,  
please email [events@thelondoner.com](mailto:events@thelondoner.com)

# THE GREEN ROOM

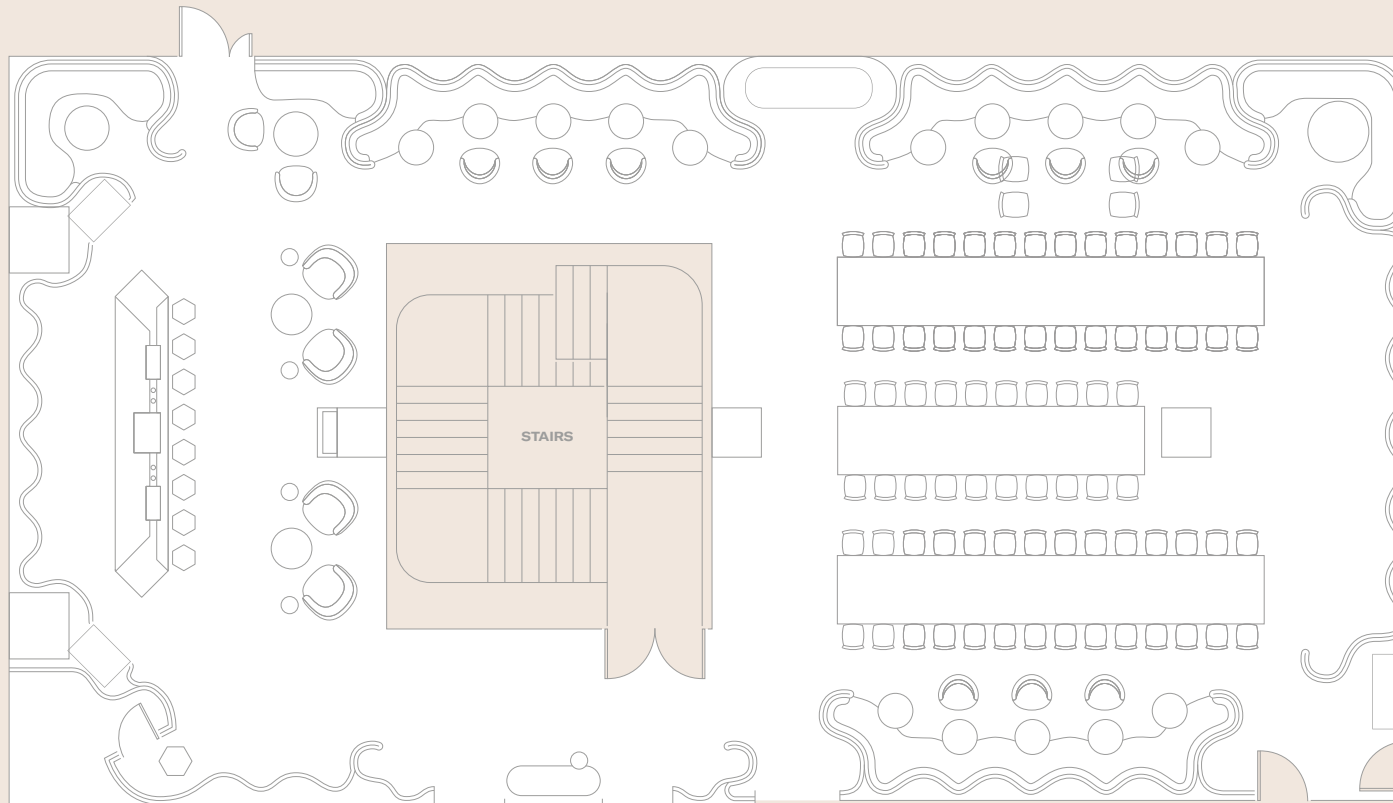


## BOARDROOM

1 table  
24 capacity at 24 guests per table

For more room layouts tailored to your event,  
please email [events@thelondoner.com](mailto:events@thelondoner.com)

# THE GREEN ROOM

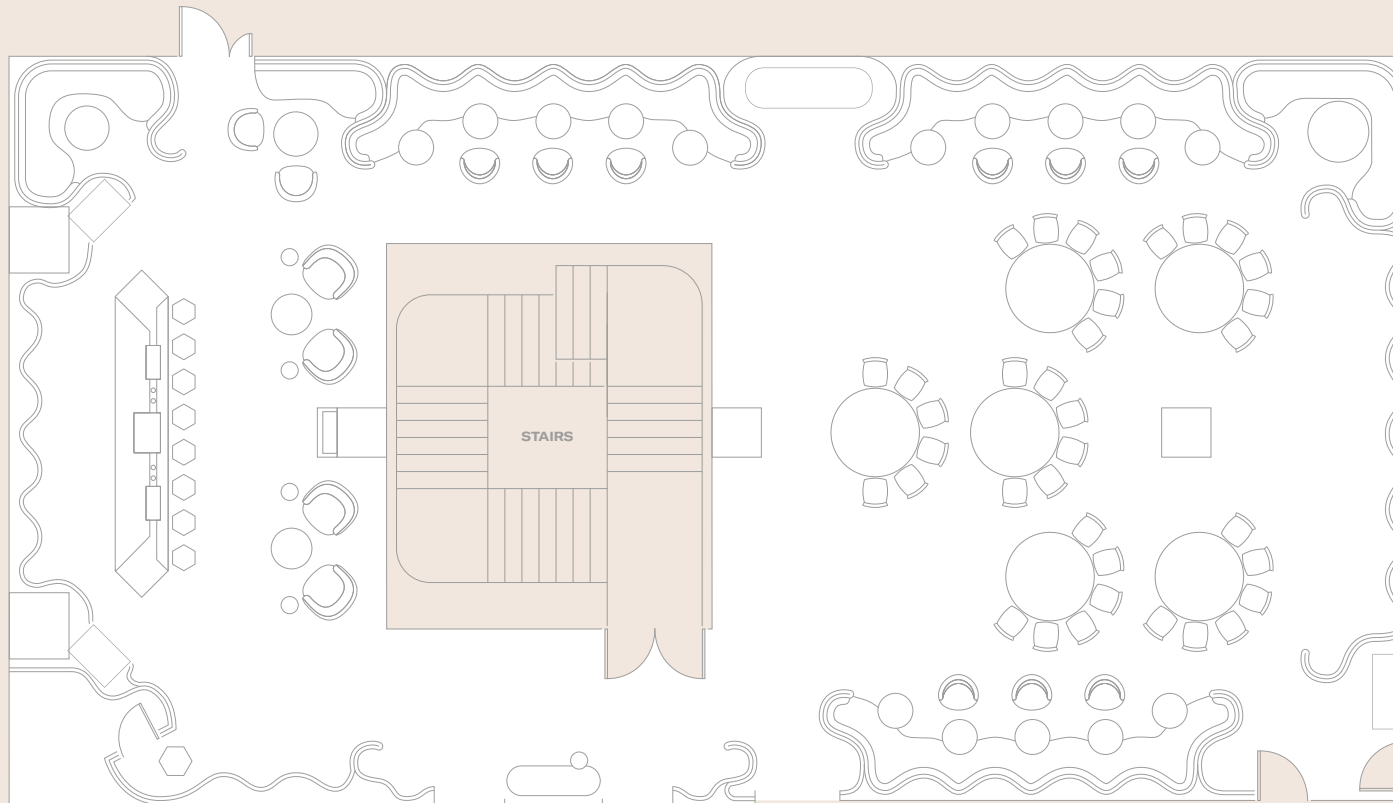


## BOARDROOM

2x 24ft long tables of 30 guests  
plus 1x 18ft long table of 20 guests

For more room layouts tailored to your event,  
please email [events@thelondoner.com](mailto:events@thelondoner.com)

# THE GREEN ROOM

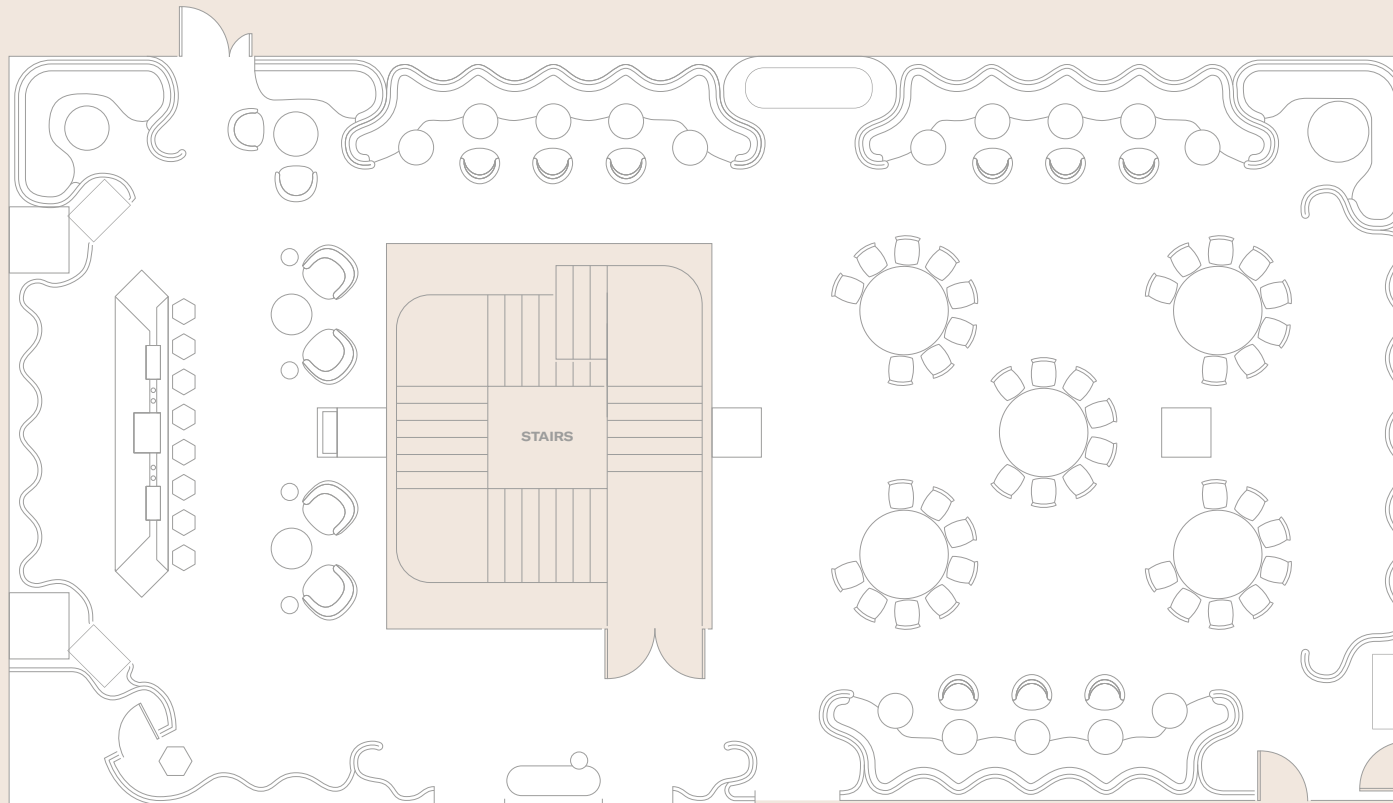


## CABARET

6 round tables  
36 capacity at 6 guests per table

For more room layouts tailored to your event,  
please email [events@thelondoner.com](mailto:events@thelondoner.com)

# THE GREEN ROOM



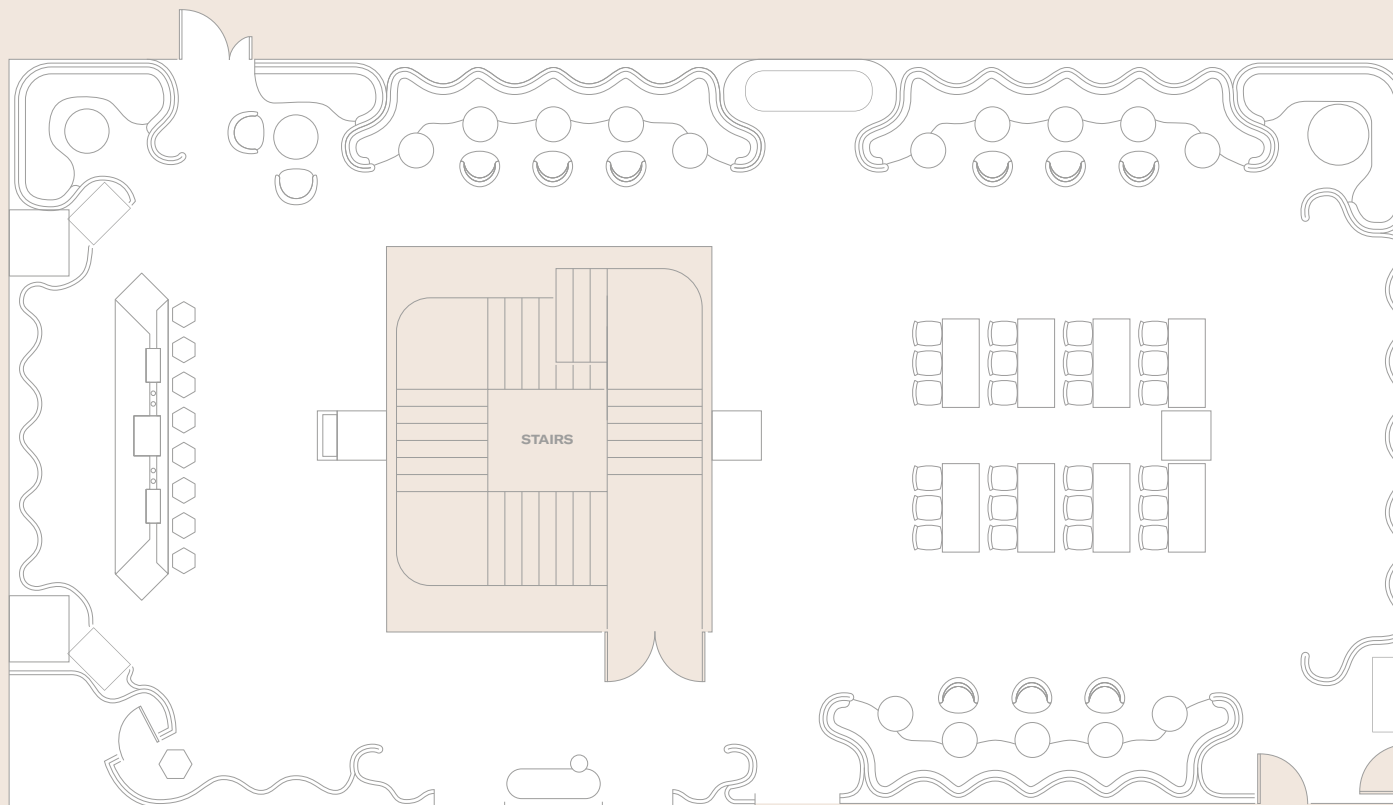
## CABARET

5 round tables  
40 capacity at 8 guests per table

For more room layouts tailored to your event,  
please email [events@thelondoner.com](mailto:events@thelondoner.com)



# THE GREEN ROOM

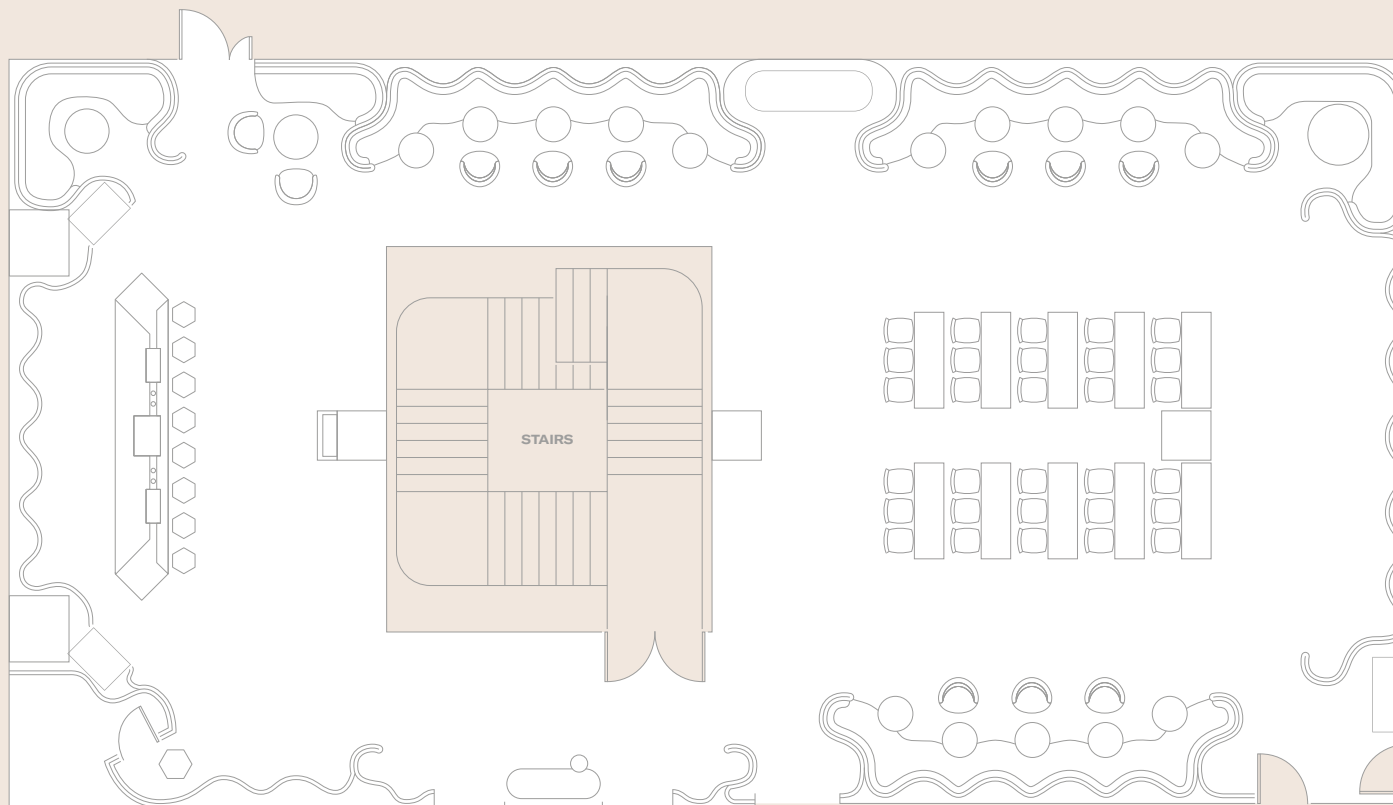


## CLASSROOM

8 tables  
24 capacity at 3 guests per table

For more room layouts tailored to your event,  
please email [events@thelondoner.com](mailto:events@thelondoner.com)

# THE GREEN ROOM

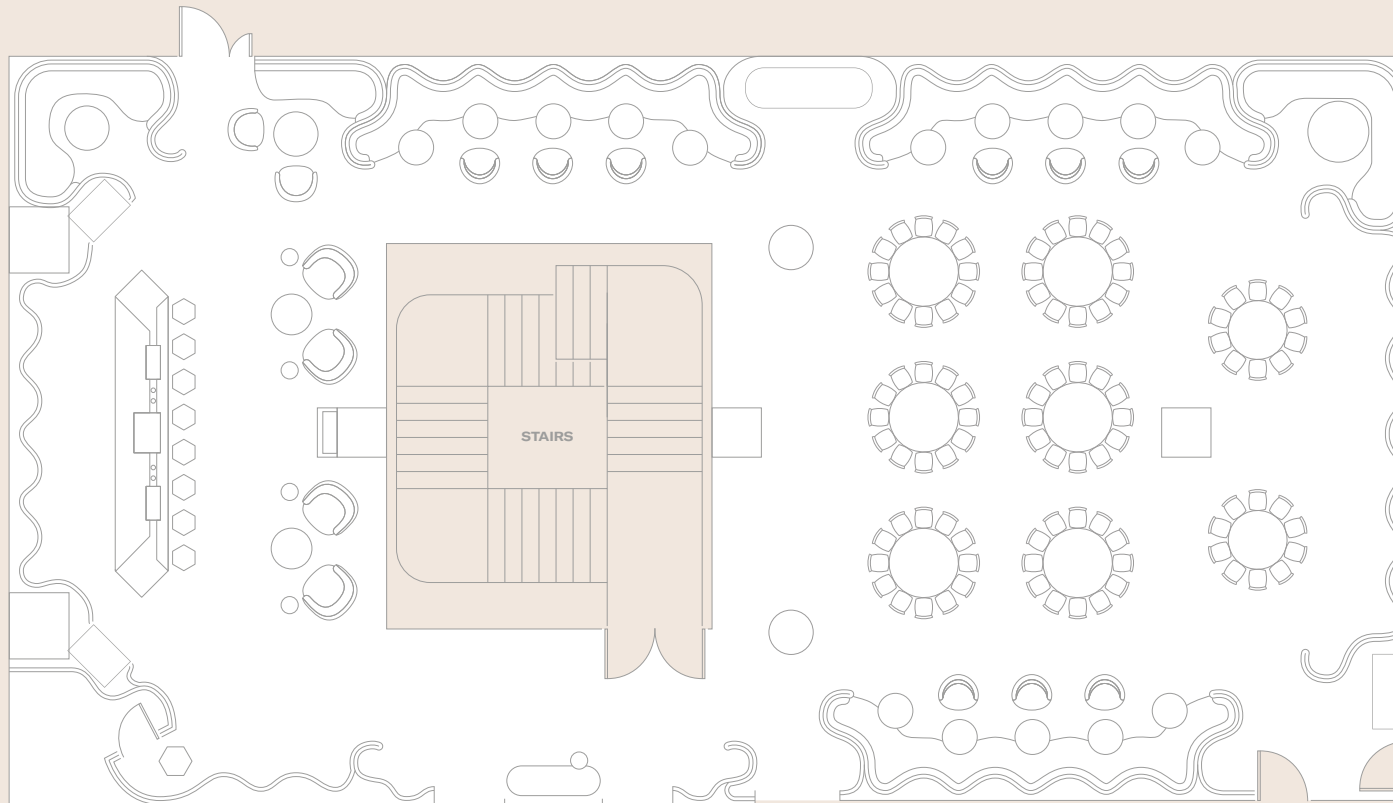


## CLASSROOM

10 tables  
30 capacity at 3 guests per table

For more room layouts tailored to your event,  
please email [events@thelondoner.com](mailto:events@thelondoner.com)

# THE GREEN ROOM

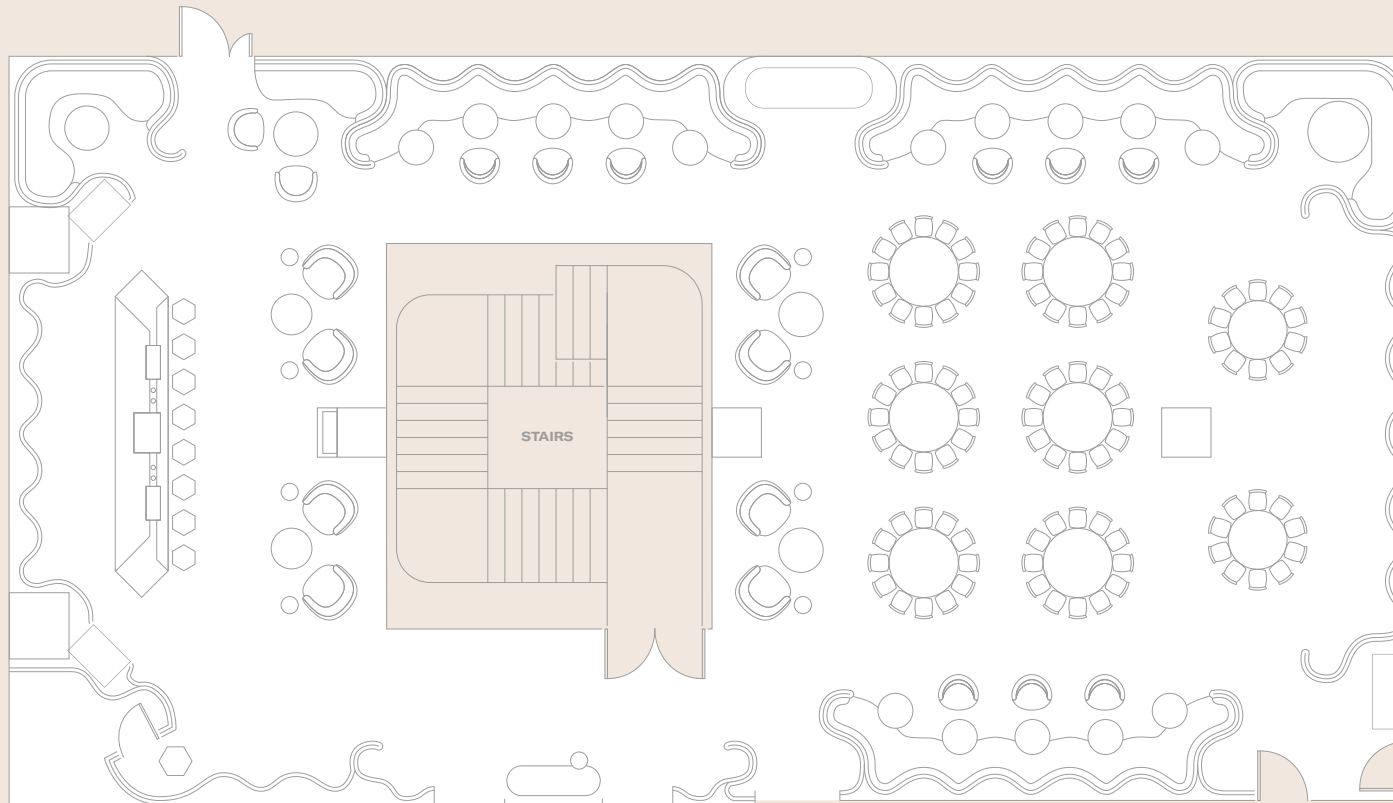


## DINNER

82 guests with 2 poseur tables  
6 x 6ft rounds of 12 guests  
plus 2 x 5ft rounds of 10 guests

For more room layouts tailored to your event,  
please email [events@thelondoner.com](mailto:events@thelondoner.com)

# THE GREEN ROOM

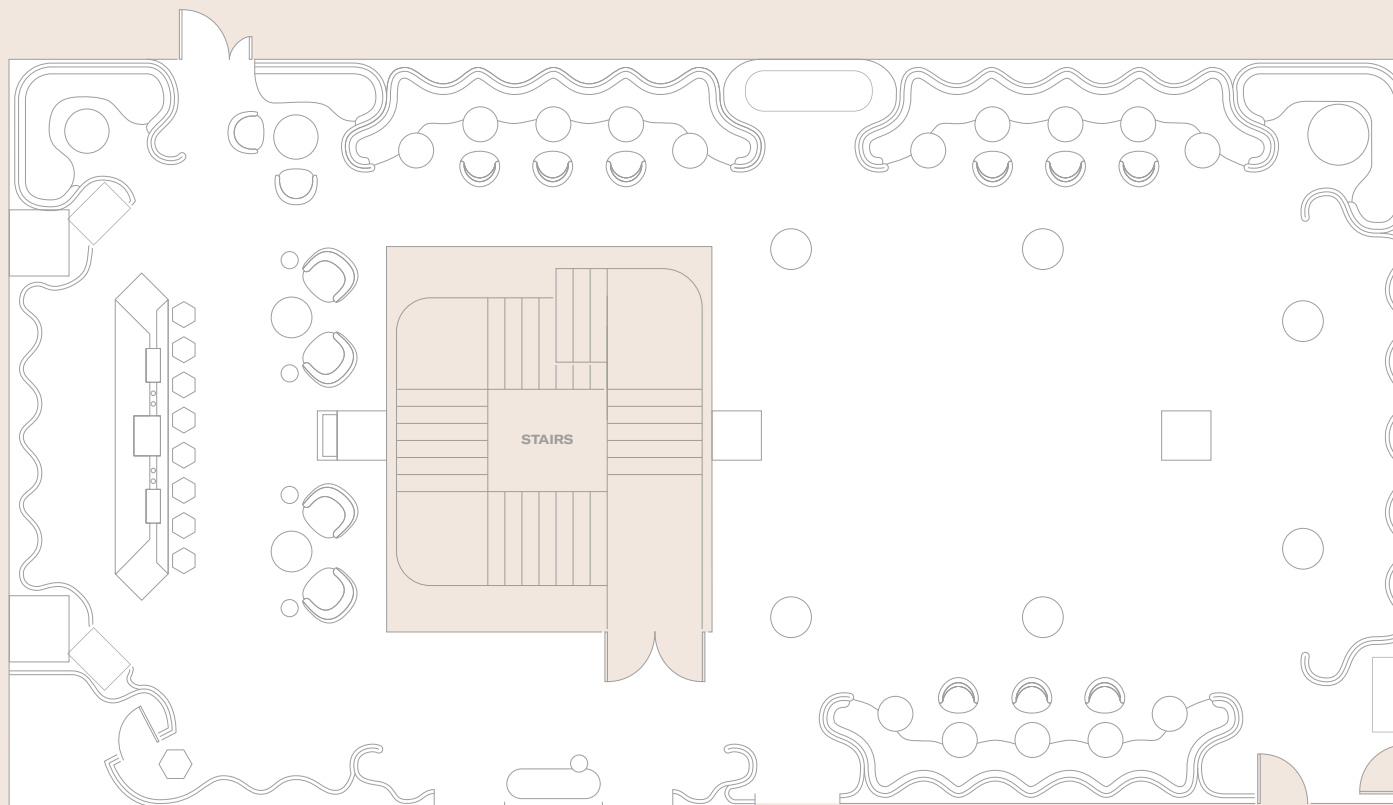


## DINNER

82 guests  
6 x 6ft rounds of 12 guests  
plus 2 x 5ft rounds of 10 guests

For more room layouts tailored to your event,  
please email [events@thelondoner.com](mailto:events@thelondoner.com)

# THE GREEN ROOM

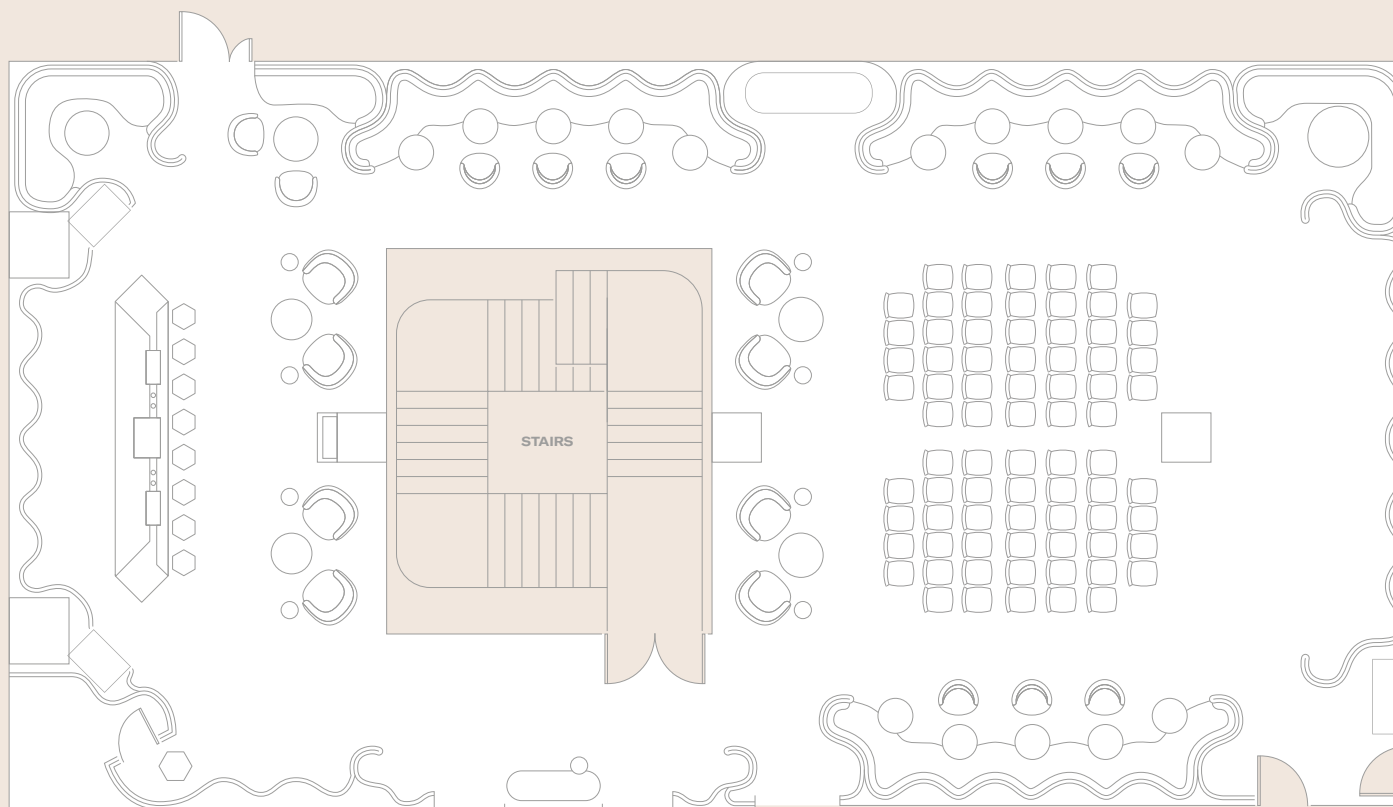


STANDING

6 poseur tables

For more room layouts tailored to your event,  
please email [events@thelondoner.com](mailto:events@thelondoner.com)

# THE GREEN ROOM



THEATRE

76 capacity

For more room layouts tailored to your event,  
please email [events@thelondoner.com](mailto:events@thelondoner.com)



THE LONDONER

LEICESTER SQ.

38 Leicester Square  
London WC2H 7DX  
+44 (0)20 7451 0101  
[thelondoner.com](http://thelondoner.com)